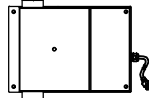


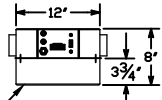
TURBINE CONNECTION PORT
LOCATED ON THIS SIDE
FOR CONNECTION TO SYSTEM

TURBINE DETAILS
PART NUMBER B10004

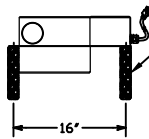
NOTE: TURBINE MAY BE REMOTELY LOCATED
IN UTILITY CLOSET, MECHANICAL ROOM, ETC.



TOP VIEW



FRONT VIEW



SIDE VIEW

BOTTOM OF UNIT

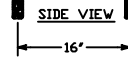
SUPPORT STRUCTURE SHOWN
LOCATED ON 16" CENTERS

PVC 20" RADIUS BEND
WITH 3" NIPPLE
SUPPLIED WITH SYSTEM

3" FLEX-HOSE PART NUMBER B2948
(CONNECTION BETWEEN TURBINE AND VALVE
CAN BE EXTENDED USING RIGID TUBING)

NOTE: TURBINE UNIT MUST BE
SETTING FLAT ON ITS BOTTOM
AS SHOWN TO OPERATE PROPERLY.

120 VOLT 60Hz
20 AMP
DUPLEX OUTLET

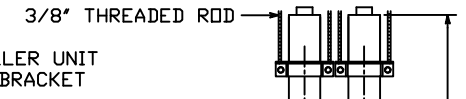


SIDE VIEW

3/8" THREADED ROD
STRAIGHT TUBE CAN BE
ADDED @ THIS LOCATION

PVC 20" RADIUS
BEND WITH FLAP
SUPPLIED WITH SYSTEM

TUBING BETWEEN THE BENDS
AND ABOVE CUSTOMER UNIT
MUST BE ORDER SEPARATLY



3/8" THREADED ROD

OPTIONAL TELLER UNIT
WALL MOUNT BRACKET

ADJUSTABLE
CEILING TRIM

58 5/8"

POWER STATION
MODEL 99-914

VENT TUBE

8 1/2" CENTER TO CENTER
FOR MULTIPLE UNITS

108"

13 3/4"

16"

TELLER
COUNTER

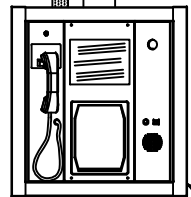
40"

8 1/2"

6 1/2"

TELLER
COUNTER

IRT-5000 CUSTOMER UNIT
SEE DRAWING 99-888



est. 1967

HAMILTON

CUSTOM MADE SECURITY

PROPRIETARY AND CONFIDENTIAL
THESE DRAWINGS ARE THE PROPERTY
OF HAMILTON SAFE CO. AND SHALL
NOT BE REPRODUCED, COPIED, USED
AS THE BASIS FOR MANUFACTURE OR
SALE OF APPARATUS WITHOUT
PERMISSION

DESCRIPTION	
MODEL IRT-5000 INTERACTIVE REMOTE TELLER	
DRAWING/MODEL NUMBER	DATE
99-1075	10/06/2021